



CCDS

CROP CONDITION AND DEVELOPMENT STAGES

AUGUST 6, 2020



DEPARTAMENT & REGIONS

HEAD OF DEPARTMENT

Ing. Esteban J. Copati
ecopati@bc.org.ar

CROP ANALYST

Ing. Martin López
martinlopez@bc.org.ar

CROP ANALYST

Daniela A. Venturino
dventurino@bc.org.ar

CROP ANALYST

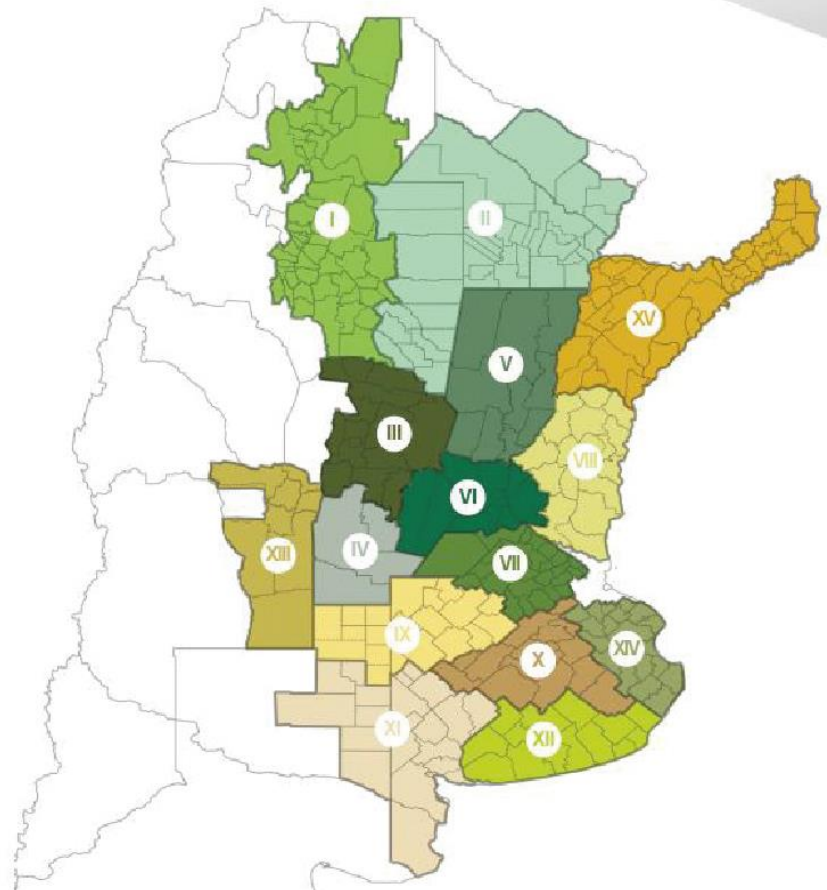
Ing. Andrés Paterniti
apaterniti@bc.org.ar

CROP SURVEY & ANALYSIS OF CROP CONDITION AND DEVELOPMENT STAGES

Sofía Console Insúa
sconsoleinsua@bc.org.ar
 Soybean

Matías Mihura
mmihura@bc.org.ar
 Corn

Maria Victoria De Carli
mdecarli@bc.org.ar
 Wheat & Sunflower



- | | |
|---------------------------------|--|
| I - NWA (North-West Argentina) | IX - North La Pampa - West Buenos Aires |
| II - NEA (North-East Argentina) | X - Central Buenos Aires |
| III - North-Central Córdoba | XI - South-West de Buenos Aires - South La Pampa |
| IV - South Córdoba | XII - South-East Buenos Aires |
| V - North-Central Santa Fe | XIII - San Luis |
| VI - North Belt | XIV - Cuenca del Salado |
| VII - South Belt | XV - Others |
| VIII - East-Central Entre Ríos | |

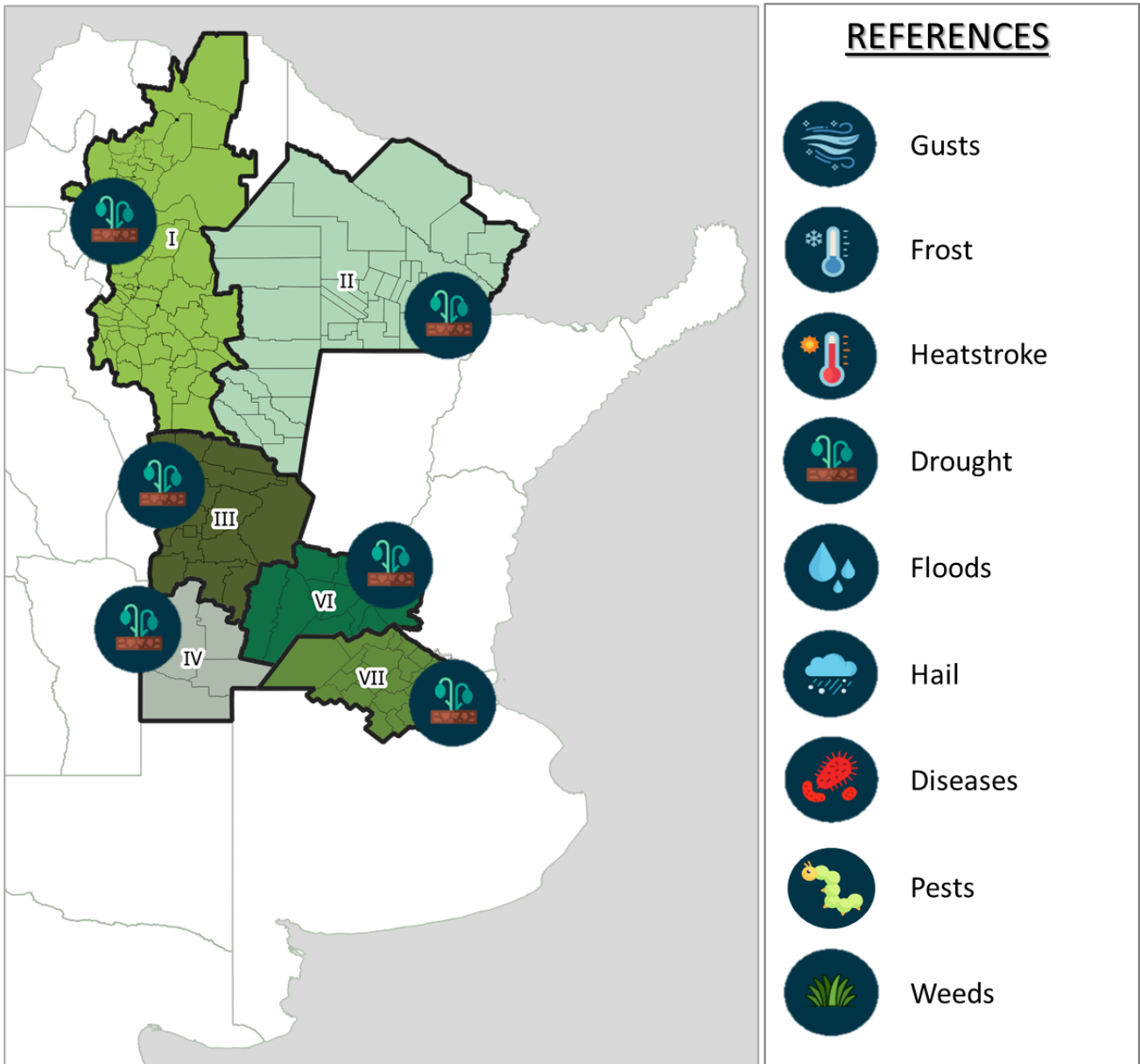
CONTACT

Av. Corrientes 123
 C1043AAB - CABA
 Tel.: +54 11 4515 8200 | 8300
estimacionesagricolas@bc.org.ar
 Twitter: @estimacionesbc

ISSN 2408-4344t

We appreciate the contribution of our Network of Collaborators throughout the country.

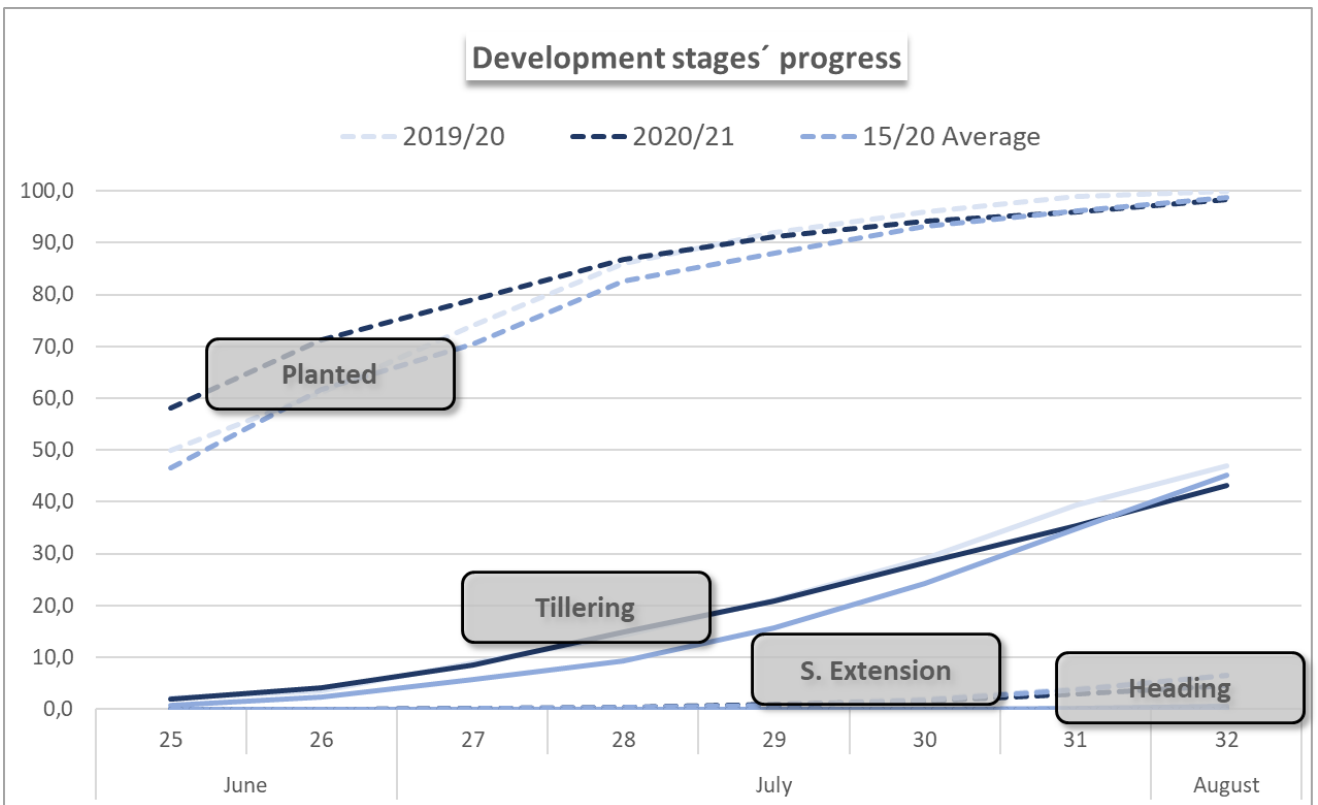
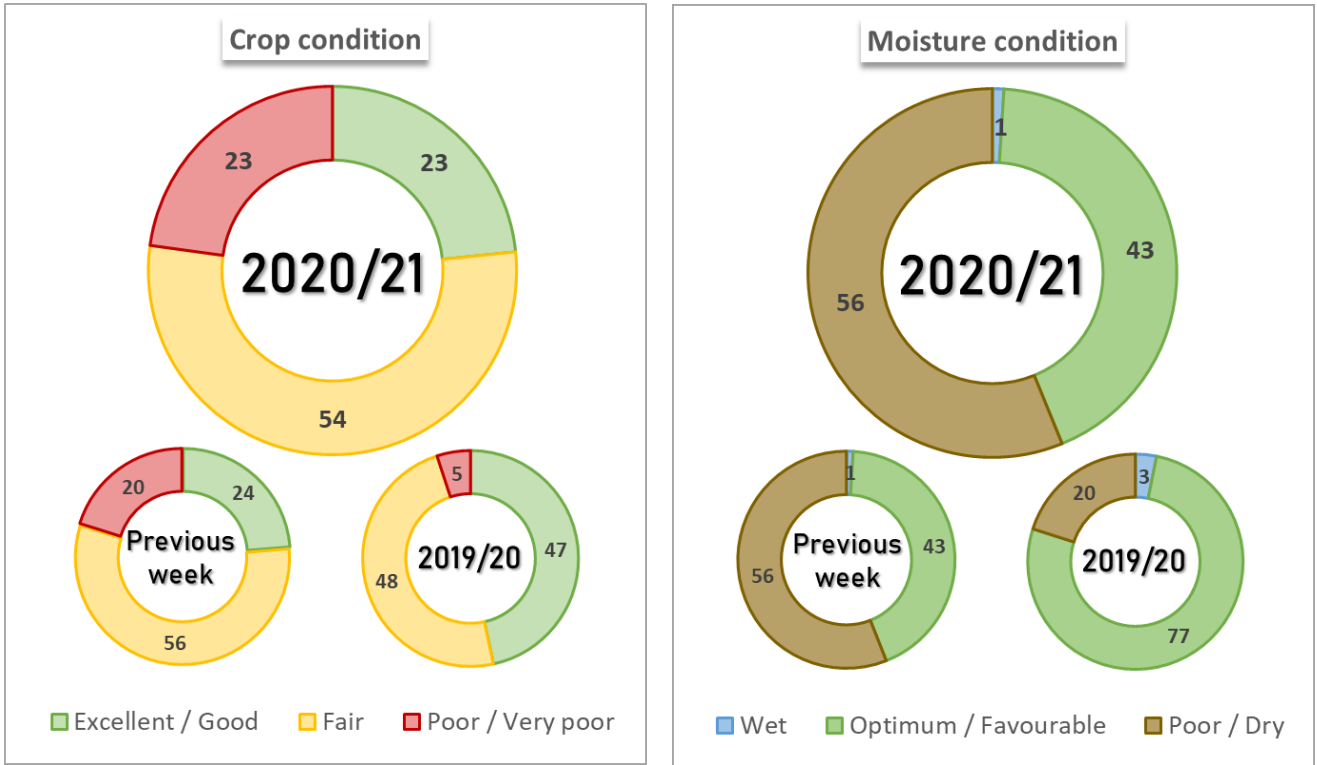
RECENT ADVERSE EVENTS



METHODOLOGY

Findings of the survey conducted through August 5, 2020. The areas under analysis in this report account for 90% of the crops planted area. The regional development data is published once planting is complete. The national planting and harvest progress, as well as the phenological data of the crops derive from the final area projection, while the moisture and crop condition derive from the planting progress to date.

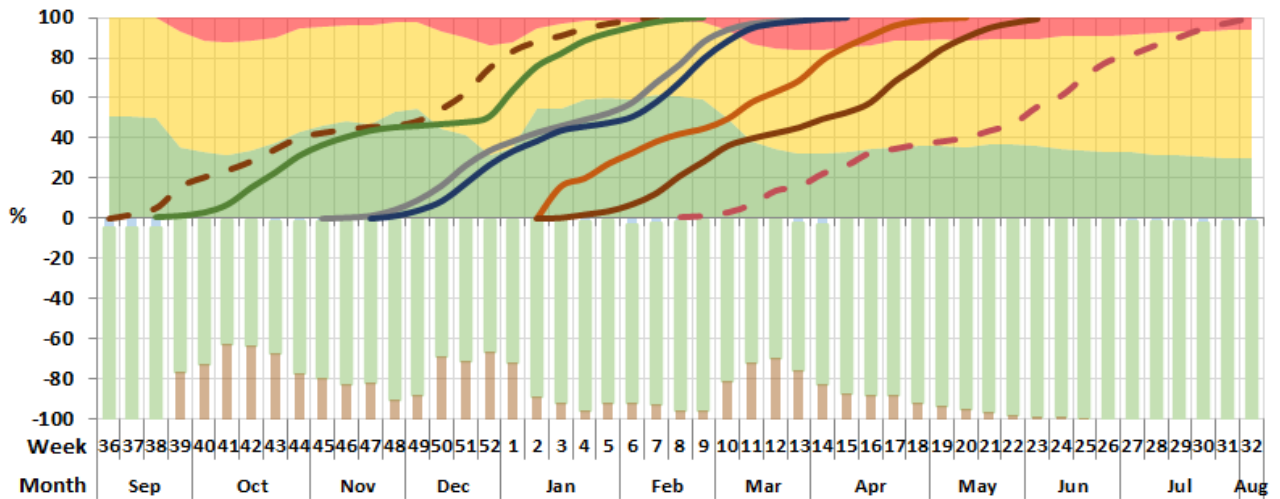
WHEAT



Regional participation in the total national area (%)															
Regions	VI	III	XII	VII	XI	IX	V	IV	II	I	X	VIII	XIV	XV	XIII
Nat. Part. 2019/20	13,1	7,9	11,0	10,0	9,8	9,2	7,7	5,7	5,6	6,2	6,1	5,1	2,0	0,4	0,2
Hist. Nat. Part.	13,3	11,6	9,7	9,5	9,3	8,3	6,9	6,6	6,8	6,1	5,3	4,6	1,6	0,3	0,2
Moisture condition, Crop condition & Development stages														Week 32	
Regions	Adverse event	Season	Moisture Condition Favourable / Optimum	Crop Condition Fair / Excellent	Planted	Tillering	Steam Extension	Heading	Ripening	Mature	Harvested				
I - NOA	Drought	20/21	-	48,0	100,0	82,0	36,0	5,0	-	-	-	-	-	-	-
		19/20	95,0	93,0	100,0	87,0	38,0	7,0	-	-	-	-	-	-	-
		15/20 Average	-	-	100,0	86,2	38,6	9,0	-	-	-	-	-	-	-
II - NEA	Drought	20/21	-	53,0	100,0	58,0	15,0	-	-	-	-	-	-	-	-
		19/20	96,0	98,0	100,0	60,0	16,0	-	-	-	-	-	-	-	-
		15/20 Average	-	-	100,0	64,0	18,6	0,4	-	-	-	-	-	-	-
III - CN Cba	Drought	20/21	-	41,0	100,0	54,0	5,0	-	-	-	-	-	-	-	-
		19/20	98,0	99,0	100,0	59,0	8,0	-	-	-	-	-	-	-	-
		15/20 Average	-	-	100,0	70,8	10,8	-	-	-	-	-	-	-	-
IV - S Cba	Drought	20/21	-	54,0	100,0	46,0	2,0	-	-	-	-	-	-	-	-
		19/20	91,0	97,0	100,0	49,0	6,0	-	-	-	-	-	-	-	-
		15/20 Average	-	-	100,0	44,6	3,6	-	-	-	-	-	-	-	-
V - CN S Fe		20/21	42,0	90,0	100,0	52,0	3,0	-	-	-	-	-	-	-	-
		19/20	96,0	95,0	100,0	53,0	8,0	-	-	-	-	-	-	-	-
		15/20 Average	-	-	100,0	52,2	7,4	-	-	-	-	-	-	-	-
VI - Núcleo Norte	Drought	20/21	-	65,0	100,0	51,0	2,0	-	-	-	-	-	-	-	-
		19/20	99,0	98,0	100,0	58,0	7,0	-	-	-	-	-	-	-	-
		15/20 Average	-	-	100,0	50,0	8,6	-	-	-	-	-	-	-	-
VII - Núcleo Sur	Drought	20/21	-	62,0	100,0	36,0	2,0	-	-	-	-	-	-	-	-
		19/20	100,0	99,0	100,0	34,0	1,0	-	-	-	-	-	-	-	-
		15/20 Average	-	-	100,0	34,0	0,2	-	-	-	-	-	-	-	-
IX - N LP - S BA		20/21	78,0	100,0	100,0	35,0	-	-	-	-	-	-	-	-	-
		19/20	90,0	96,0	100,0	33,0	-	-	-	-	-	-	-	-	-
		15/20 Average	-	-	99,6	27,4	0,4	-	-	-	-	-	-	-	-
X - Ctro BA		20/21	100,0	100,0	100,0	33,0	-	-	-	-	-	-	-	-	-
		19/20	99,0	99,0	100,0	32,0	-	-	-	-	-	-	-	-	-
		15/20 Average	-	-	97,4	28,6	-	-	-	-	-	-	-	-	-
XI - SO BA - S LP		20/21	100,0	-	98,2	-	-	-	-	-	-	-	-	-	-
		19/20	94,0	-	100,0	-	-	-	-	-	-	-	-	-	-
		15/20 Average	-	-	94,8	-	-	-	-	-	-	-	-	-	-
XII - SE BA		20/21	94,0	-	86,1	-	-	-	-	-	-	-	-	-	-
		19/20	100,0	-	100,0	-	-	-	-	-	-	-	-	-	-
		15/20 Average	-	-	90,4	-	-	-	-	-	-	-	-	-	-
National		20/21	42,7	77,2	98,3	43,2	4,5	0,3	-	-	-	-	-	-	-
		19/20	96,7	97,4	100,0	47,0	6,6	0,5	-	-	-	-	-	-	-
		15/20 Average	-	-	98,8	45,1	6,6	0,6	-	-	-	-	-	-	-

Corn 2019/20 Development in Argentina

Crop Condition: ■ Poor/Very poor ■ Fair ■ Excellent/Good
 Development Stages: — Planting — Leaf Development — Pollination
— Silking — Grain Growth — Mature - - - Harvest



Moisture Condition: ■ Dry/Poor ■ Favourable/Optimum ■ Wet

Source: Department of Agricultural Estimates - Buenos Aires Grain Exchange

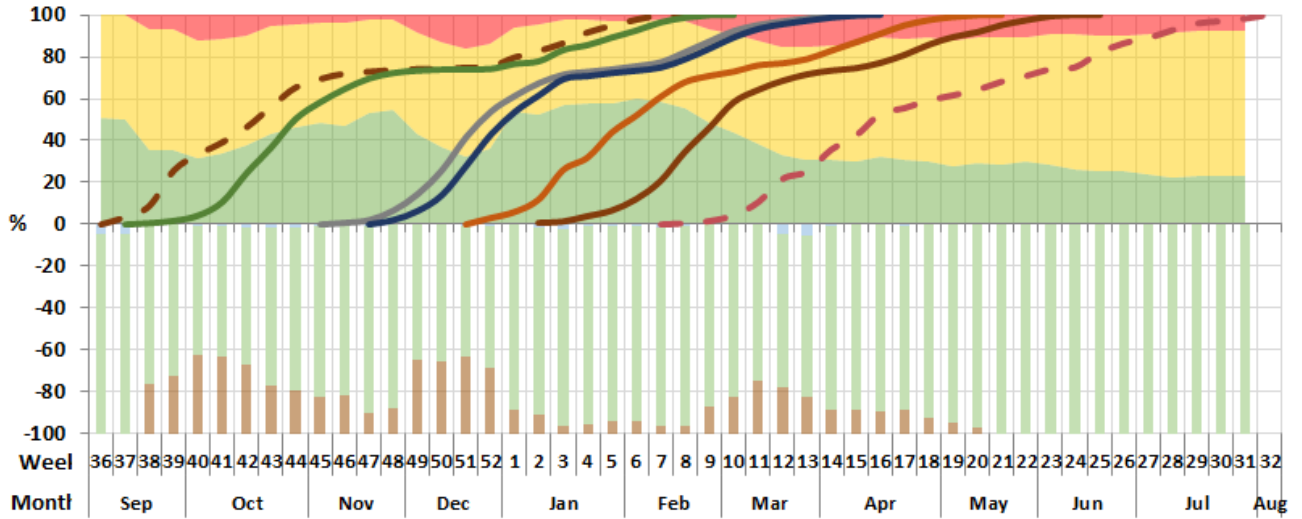
Data to Aug 5, 20

EARLY CORN

Regional participation in the total national area (%)																
Regions	II	VI	VII	IX	I	III	X	VIII	IV	XII	V	XI	XIII	XIV	XV	
Nat. Part. 2019/20	16,0	16,0	12,8	11,0	9,1	5,5	5,3	5,3	5,2	3,8	2,7	2,6	2,1	1,8	0,8	
Hist. Nat. Part.	12,5	17,2	13,9	10,6	7,7	4,2	6,0	5,2	6,5	4,5	3,0	3,8	2,1	2,0	0,6	
Moisture condition, Crop condition & Development stages												Week 32				
Zone	Adverse event	Season	Moisture Condition Favourable / Optimum	Crop Condition Fair / Excellent	Planted	Leaf Development	Pollination	Silking	Grain Growth	Mature	Harvested					
I - NWA		19/20	-	-	100,0	100,0	100,0	100,0	100,0	100,0	100,0					
		18/19	99,0	100,0	100,0	100,0	100,0	100,0	100,0	100,0	100,0	78,0				
		14/19 Average	✓ -	-	100,0	100,0	100,0	100,0	100,0	100,0	100,0	75,6				
II - NEA		19/20	-	-	100,0	100,0	100,0	100,0	100,0	100,0	100,0					
		18/19	92,0	88,0	100,0	100,0	100,0	100,0	100,0	100,0	100,0	70,0				
		14/19 Average	✓ -	-	100,0	100,0	100,0	100,0	100,0	100,0	100,0	80,3				
III - NCnt Cba		19/20	-	-	100,0	100,0	100,0	100,0	100,0	100,0	100,0					
		18/19	-	-	100,0	100,0	100,0	100,0	100,0	100,0	100,0	100,0				
		14/19 Average	✓ -	-	100,0	100,0	100,0	100,0	100,0	100,0	100,0	98,4				
IV - S Cba		19/20	-	-	100,0	100,0	100,0	100,0	100,0	100,0	100,0					
		18/19	-	-	100,0	100,0	100,0	100,0	100,0	100,0	100,0	100,0				
		14/19 Average	✓ -	-	100,0	100,0	100,0	100,0	100,0	100,0	100,0	98,6				
V - NCnt S Fe		19/20	-	-	100,0	100,0	100,0	100,0	100,0	100,0	100,0					
		18/19	-	-	100,0	100,0	100,0	100,0	100,0	100,0	100,0	100,0				
		14/19 Average	✓ -	-	100,0	100,0	100,0	100,0	100,0	100,0	100,0	99,2				
VI - North Belt		19/20	-	-	100,0	100,0	100,0	100,0	100,0	100,0	100,0					
		18/19	-	-	100,0	100,0	100,0	100,0	100,0	100,0	100,0	100,0				
		14/19 Average	✓ -	-	100,0	100,0	100,0	100,0	100,0	100,0	100,0	99,9				
VII - South Belt		19/20	-	-	100,0	100,0	100,0	100,0	100,0	100,0	100,0					
		18/19	-	-	100,0	100,0	100,0	100,0	100,0	100,0	100,0	100,0				
		14/19 Average	✓ -	-	100,0	100,0	100,0	100,0	100,0	100,0	100,0	99,9				
IX - N LP - W BA		19/20	-	-	100,0	100,0	100,0	100,0	100,0	100,0	100,0					
		18/19	-	-	100,0	100,0	100,0	100,0	100,0	100,0	100,0	100,0				
		14/19 Average	✓ -	-	100,0	100,0	100,0	100,0	100,0	100,0	100,0	99,3				
X - Cnt BA		19/20	-	-	100,0	100,0	100,0	100,0	100,0	100,0	100,0					
		18/19	-	-	100,0	100,0	100,0	100,0	100,0	100,0	100,0	100,0				
		14/19 Average	✓ -	-	100,0	100,0	100,0	100,0	100,0	100,0	100,0	99,6				
XII - SE BA		19/20	-	-	100,0	100,0	100,0	100,0	100,0	100,0	100,0					
		18/19	98,0	98,0	100,0	100,0	100,0	100,0	100,0	100,0	100,0	98,0				
		14/19 Average	✓ -	-	100,0	100,0	100,0	100,0	100,0	100,0	100,0	96,8				
XIII - San Luis		19/20	-	-	100,0	100,0	100,0	100,0	100,0	100,0	100,0					
		18/19	-	-	100,0	100,0	100,0	100,0	100,0	100,0	100,0	100,0				
		14/19 Average	✓ -	-	100,0	100,0	100,0	100,0	100,0	100,0	100,0	99,6				
National		19/20	-	-	100,0	100,0	100,0	100,0	100,0	100,0	100,0					
		18/19	94,3	92,0	100,0	100,0	100,0	100,0	100,0	100,0	100,0	100,0	91,1			
		14/19 Average	✓ -	-	100,0	100,0	100,0	100,0	100,0	100,0	100,0	93,1				

Early Corn 2019/20 Development in Argentina

Crop Condition: ■ Poor/Very poor ■ Fair ■ Excellent/Good
Development Stages: — Planting — Leaf Development — Pollination — Silking — Grain Growth — Mature - - - Harvest



Moisture Condition: ■ Dry/Poor ■ Favourable/Optimum ■ Wet

Source: Department of Agricultural Estimates - Buenos Aires Grain Exchange

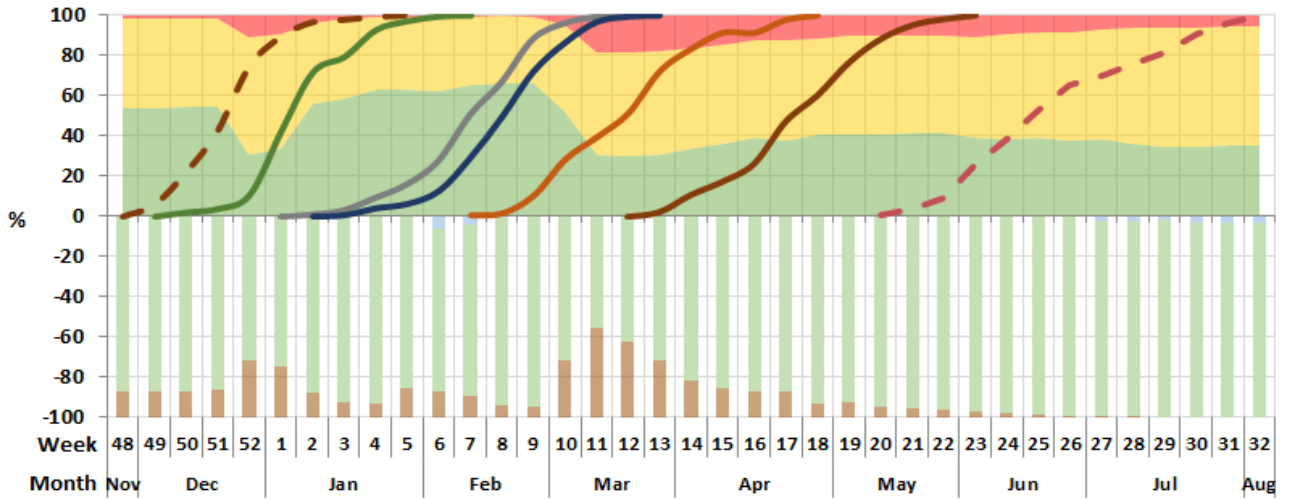
Data to Aug 5, 20

Regional participation in the total national area (%)															
Regions	III	IV	XIII	IX	V	X	VIII	XII	XI	VI	XIV	VII	II	I	XV
Nat. Part. 2019/20	29,0	24,8	10,2	9,9	5,4	5,0	4,7	3,5	2,6	1,7	1,7	1,6	0,0	0,0	0,0
Hist. Nat. Part.	25,3	18,7	6,6	11,1	4,8	4,9	3,1	1,8	1,9	3,8	1,4	3,5	7,4	5,2	0,5
Moisture condition, Crop condition & Development stages														Week 32	
Regions	Adverse event	Season	Moisture Condition Favourable / Optimum	Crop Condition Fair / Excellent	Planted	Leaf Development	Pollination	Silking	Grain Growth	Mature	Harvested				
III - NCnt Cba		19/20	-	-	100,0	100,0	100,0	100,0	100,0	100,0	100,0	100,0	100,0	100,0	100,0
		18/19	99,0	100,0	100,0	100,0	100,0	100,0	100,0	100,0	100,0	100,0	100,0	100,0	68,0
		14/19 Average	-	-	100,0	100,0	100,0	100,0	100,0	100,0	100,0	100,0	100,0	100,0	70,0
IV - S Cba		19/20	-	-	100,0	100,0	100,0	100,0	100,0	100,0	100,0	100,0	100,0	100,0	100,0
		18/19	99,0	99,0	100,0	100,0	100,0	100,0	100,0	100,0	100,0	100,0	100,0	100,0	60,0
		14/19 Average	-	-	100,0	100,0	100,0	100,0	100,0	100,0	100,0	100,0	100,0	100,0	66,8
V - NCnt S Fe		19/20	-	-	100,0	100,0	100,0	100,0	100,0	100,0	100,0	100,0	100,0	100,0	100,0
		18/19	98,0	97,0	100,0	100,0	100,0	100,0	100,0	100,0	100,0	100,0	100,0	100,0	73,0
		14/19 Average	-	-	100,0	100,0	100,0	100,0	100,0	100,0	100,0	100,0	100,0	100,0	80,8
VI - North Belt		19/20	-	-	100,0	100,0	100,0	100,0	100,0	100,0	100,0	100,0	100,0	100,0	100,0
		18/19	98,0	97,0	100,0	100,0	100,0	100,0	100,0	100,0	100,0	100,0	100,0	100,0	81,0
		14/19 Average	-	-	100,0	100,0	100,0	100,0	100,0	100,0	100,0	100,0	100,0	100,0	89,0
VII - South Belt		19/20	-	-	100,0	100,0	100,0	100,0	100,0	100,0	100,0	100,0	100,0	100,0	100,0
		18/19	98,0	97,0	100,0	100,0	100,0	100,0	100,0	100,0	100,0	100,0	100,0	100,0	80,0
		14/19 Average	-	-	100,0	100,0	100,0	100,0	100,0	100,0	100,0	100,0	100,0	100,0	86,4
IX - N LP - W BA		19/20	-	-	100,0	100,0	100,0	100,0	100,0	100,0	100,0	100,0	100,0	100,0	100,0
		18/19	98,0	99,0	100,0	100,0	100,0	100,0	100,0	100,0	100,0	100,0	100,0	100,0	70,0
		14/19 Average	-	-	100,0	100,0	100,0	100,0	100,0	100,0	100,0	100,0	100,0	100,0	73,4
X - Cnt BA		19/20	-	-	100,0	100,0	100,0	100,0	100,0	100,0	100,0	100,0	100,0	100,0	100,0
		18/19	98,0	97,0	100,0	100,0	100,0	100,0	100,0	100,0	100,0	100,0	100,0	100,0	73,0
		14/19 Average	-	-	100,0	100,0	100,0	100,0	100,0	100,0	100,0	100,0	100,0	100,0	77,0
XII - SE BA		19/20	-	-	100,0	100,0	100,0	100,0	100,0	100,0	100,0	100,0	100,0	100,0	100,0
		18/19	95,0	97,0	100,0	100,0	100,0	100,0	100,0	100,0	100,0	100,0	100,0	100,0	53,0
		14/19 Average	-	-	100,0	100,0	100,0	100,0	100,0	100,0	100,0	100,0	100,0	100,0	49,8
XIII - San Luis		19/20	-	-	100,0	100,0	100,0	100,0	100,0	100,0	100,0	100,0	100,0	100,0	100,0
		18/19	100,0	98,0	100,0	100,0	100,0	100,0	100,0	100,0	100,0	100,0	100,0	100,0	65,0
		14/19 Average	-	-	100,0	100,0	100,0	100,0	100,0	100,0	100,0	100,0	100,0	100,0	75,2
National		19/20	-	-	100,0	100,0	100,0	100,0	100,0	100,0	100,0	100,0	100,0	100,0	100,0
		18/19	98,5	98,6	100,0	100,0	100,0	100,0	100,0	100,0	100,0	100,0	100,0	100,0	66,9
		14/19 Average	-	-	100,0	100,0	100,0	100,0	100,0	100,0	100,0	100,0	100,0	100,0	70,8

LATE CORN

Late Corn 2019/20 Development in Argentina

Crop Condition: ■ Poor/Very poor ■ Fair ■ Excellent/Good
 Development Stages: — Planting — Leaf Development — Pollination
— Silking — Grain Growth — Mature - - - Harvest



Moisture Condition: ■ Dry/Poor ■ Favourable/Optimum ■ Wet

Source: Department of Agricultural Estimates - Buenos Aires Grain Exchange

Data to Aug 5, 20